

## About the Early Hand Asymmetry Program

The program provides assessment to infants who have a high probability of, or a diagnosis of cerebral palsy AND asymmetric arm and hand function. Families and community teams will receive consultation and support for implementation of early hand therapy. The program does not provide active therapy.

## How to make a referral

Online referral can be accessed by [here](#)  
Indicate/check off early hand asymmetry therapy on the referral.

## Referral criteria

- The infant lives in Toronto.
- The infant is between the ages of 3 months and under 2 years old
- The infant has asymmetrical hand use AND has a diagnosis of, or has a high probability of cerebral palsy.
- The infant is connected to community services (i.e. OT, PT, EI).

## For more information, contact

Sophie Lam-Damji, MOT OT Reg. (Ont.)  
Occupational Therapist  
416-425-6220 ext. 6377  
slam-damji@hollandbloorview.ca

Liz Cambridge, MOT, OT Reg. (Ont.)  
Occupational Therapist  
416-425-6220 ext 6330  
lcambridge@hollandbloorview.ca



Physician referral to Early Hand Asymmetry Program



Infant receives:

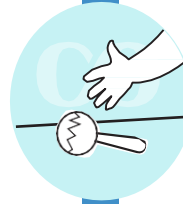
- ✓ Hammersmith assessment
- ✓ Hand assessment (Mini AHA or HAI) Consultation and recommendations for early hand therapy

Families and community team receives:

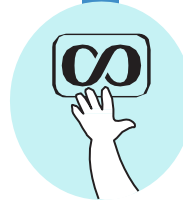
- ✓ consultation and support for implementing early hand therapy program



Infant continues with community clinicians for therapy



Infant returns to Holland Bloorview for a follow-up assessment five months after initial visit



Infants will be referred to Holland Bloorview neuromotor program for ongoing care at two years of age.

