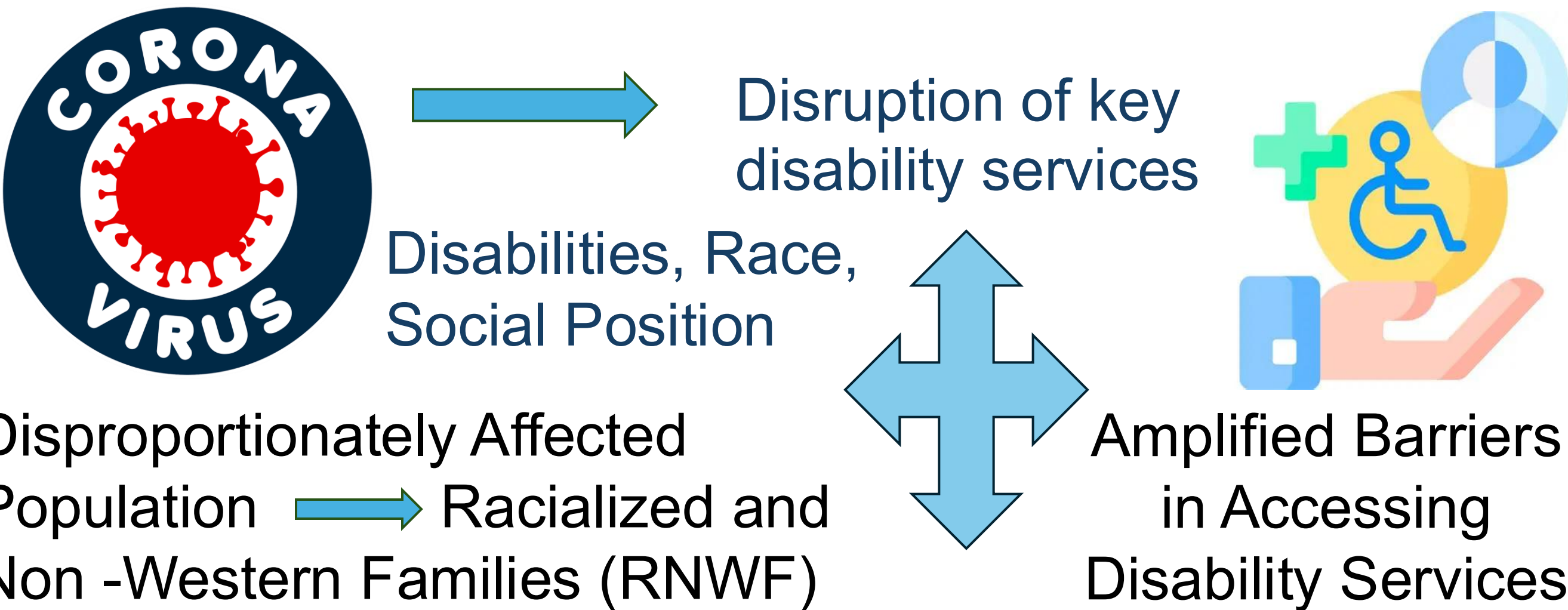


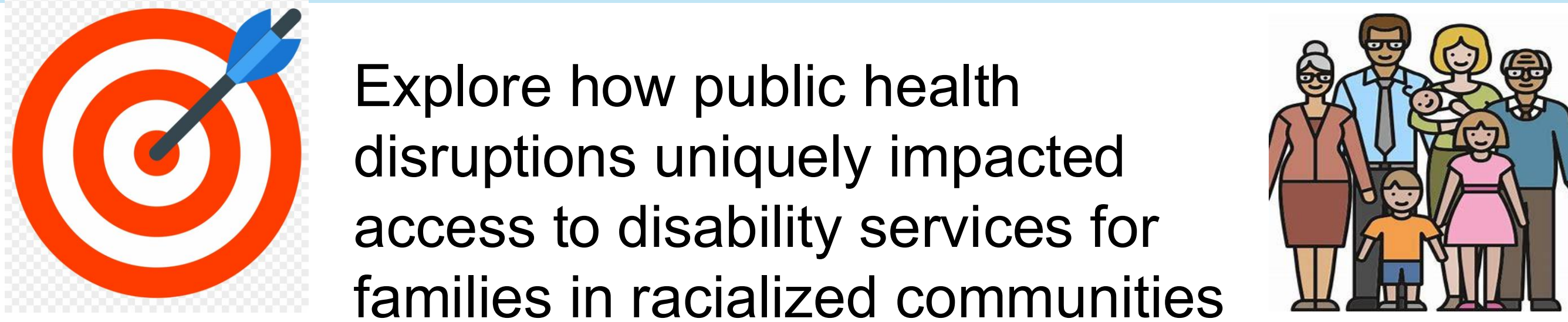
COVID-19 and Children with Disabilities: Experiences of Racialized and Non-Western Families (RNWF) in Accessing Disability Services

Ugbesia S., Nanthakumar S., Lamptey, D.

Background



Objective



Research Question

What were the experiences of racialized and Non - Western families in accessing disability services during the pandemic ?

Method and Analysis

Qualitative Scoping Review Guided by: PRISMA-SR, Thematic Content Analysis, Intersectionality and Ecological Systems Theory



PRISMA Flowchart Diagram

Total articles analyzed for this study

38

48



Service Providers and Policymakers Must Work in Partnership With Racialized and Non-Western Children With Disabilities – and Their Families - to Ensure Equitable Access to Disability Services During Public Health Crises



SEE MORE

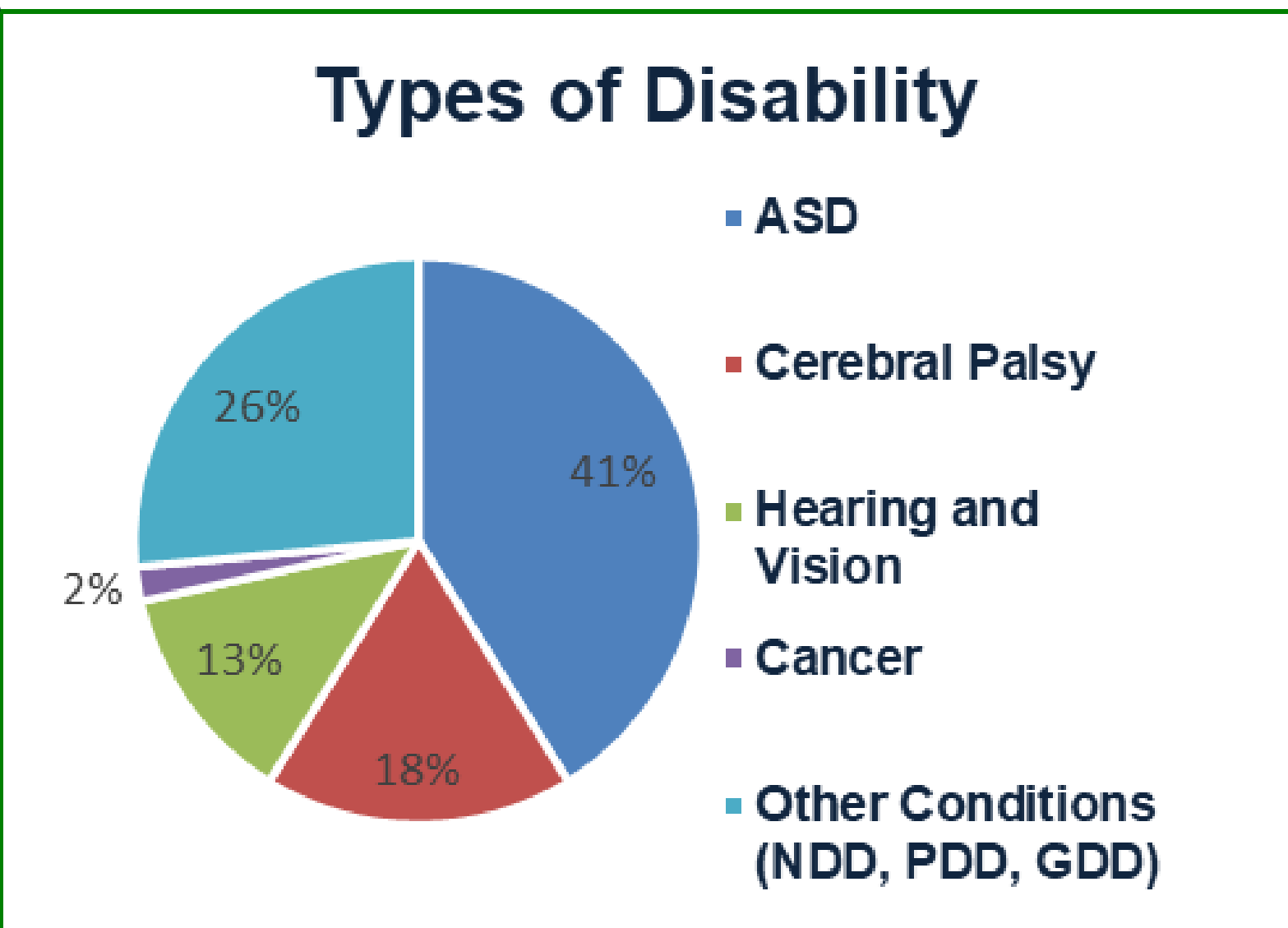


References

Holland Bloorview
Kids Rehabilitation Hospital

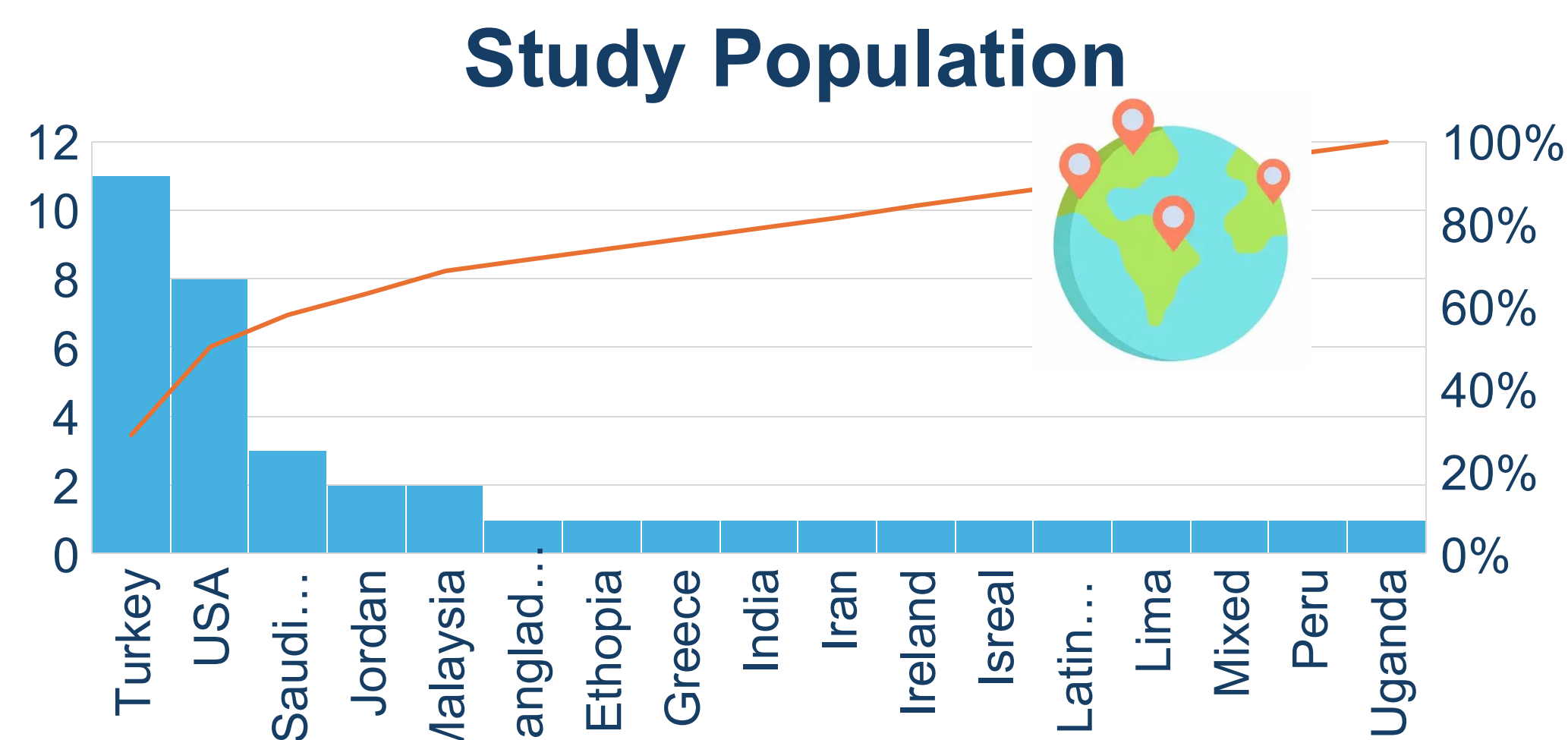
Bloorview
RESEARCH INSTITUTE

Findings



Despite the prevalence of ASD, RNWF in North America often face challenges in obtaining a diagnosis and support for their children. Also suggests higher service disruptions and equity gaps for racialized families navigating ASD services

Middle Eastern studies dominated the review, suggesting a research gap for examining the experiences of Black-majority populations



Key Themes

Service Disruption (Uganda)

"My boy has not been able to go for his reviews and therapy exercises for over two months, he is regressing and beginning to self-injure again"

Financial Difficulties (Uganda)

"We are trying to survive [...] people are broke... They should remove the lock-down so that people can go back and work" (mother of a girl with CP, communication difficulties and ID)

Caregiver Burden (USA)

"I felt like I wasn't a mom anymore I felt like I was the teacher, the speech path, the OT, the language person"

Telehealth Challenges (Turkey)

"Now at home [physical, occupation, and speech therapy were] going to be through the screen...I didn't know what to do"

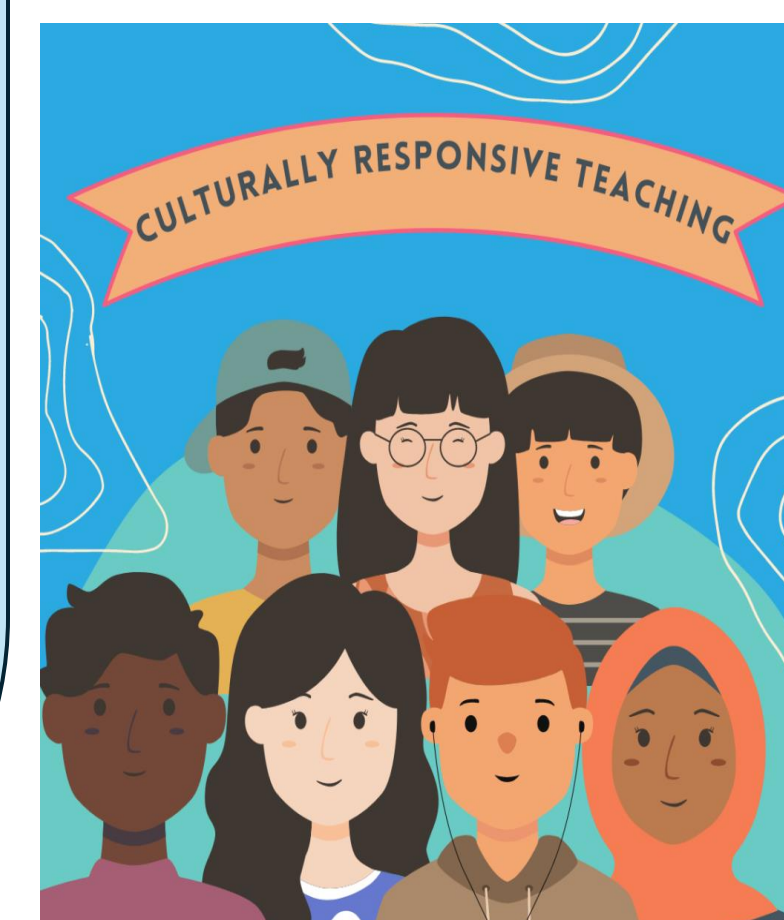
Mistrust of Systems (Iran)

"Nurses are more nervous than before and stay away from us. They do not spend enough time to answer our questions, they just lead us to our rooms and tell us not to leave the room"

Conclusion

To improve trust and access, the voices of RNWF must be embedded in policy design, and they should be positioned as partners – not just research participants and recipients – of disability services.

Relevance to Holland Bloorview and Clients



Underscores the need for **meaningful, purposeful, and sustainable** collaboration between Holland Bloorview and Racialized families – to ensure for future pandemic planning that **erases service gaps** for Racialized families