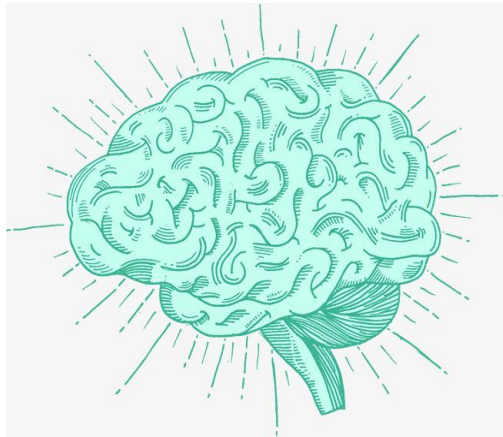


Participate in Research

Usability Study - Teaching Educators about Acquired Brain Injury
(*Teach-ABI*): A Healthier Classroom For All.



Principal Investigator:
Shannon Scratch,
PhD



CONTACT INFORMATION:

TO ASK QUESTIONS OR TO SIGN UP, CONTACT

Lauren Saly at:
lsaly@hollandbloorview.ca

Date Posted: April 1, 2020

Version Date: April 1, 2020

Do you work within the elementary school setting? We would love your feedback on an e-Learning module.

Consider participating in our research study to evaluate a user-driven Acquired Brain Injury (ABI) eLearning intervention (*Teach-ABI*) for educators.

What is this study about?

- *Teach-ABI* is an e-Learning online module created for educators to support students with ABI. The objective is to raise Ontario educators' awareness and knowledge of ABI and promote positive outcomes for children with ABI in the education system.

Who can participate?

- We are looking to recruit pre-service teachers (teacher trainees) and/or registered educators who work within the elementary school setting.

What's involved?

- Participants will attend an online session for two hours using the video conferencing platform *Zoom*.
- During this session, participants will be asked to complete an e-learning module and give a research assistant their feedback during the process.
- Participants will also be asked to complete an exit interview so the research team can better understand their experience with the module.

Potential Benefits?

- Your feedback will help in designing an improved e-Learning module for elementary school educators.

Potential Risks?

- Some participants may feel uncomfortable or worried giving their feedback.

Participants will receive a small token of appreciation to thank them for their time.

REB #:18-828